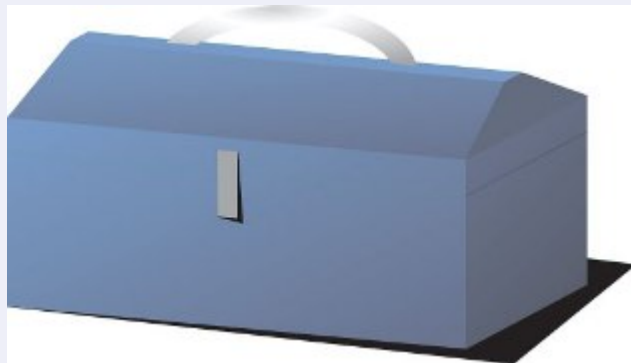


June 4, 2010

New Care Transitions Resources!

We've just updated our comprehensive resource library with care transitions tools, presentations and evidence base items to help you and your agency improve quality of care for older patients.

- Visit the [tools page](#) and select 'Transitions' in the drop-down menu to download free tools.
- Be sure to take a look at our [presentations page](#) which can be a great resource for agency staff meetings or to brush up on a certain topic.
- Read CHAMP's [Care Coordination brief](#) to see how you can improve care transitions. If you're a registered nurse you can also earn continuing education hours by reading the brief and completing an online test at your convenience. [Click here](#) to learn more.



Rising to the Care Transitions Challenge

Patricia Kelleher, Executive Director at the Home Care Alliance of Massachusetts discusses how home health agencies can rise to the care transitions challenge. Here's an excerpt from her blog:

"We all know that moving from one health care setting to another can be a stressful experience for patients and their family members. Changes in health status, treatment plans, medications and working with multiple, unfamiliar clinicians can be overwhelming. Even for patients with complex medical conditions, hospital admissions can be brief, without sufficient time to educate the patient and family members about disease management at home. As transitions occur, there is often a breakdown in communication about critical information involving home safety, medications, plans for post acute care follow-up, and social supports."

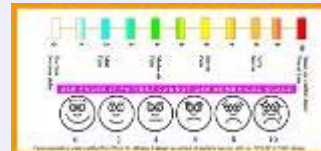
[Click here](#) to read Patricia's entire blog post.

Geriatric Medication Management

Starts July 26, 2010

Available to Frontline Nurse Managers and Certified Case Managers (CCM) for CE hours

[Click here](#) to view a demonstration and to register for the course

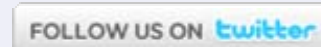


Geriatric Pain Management

Starts July 26, 2010

Available to Frontline Nurse Managers for CE hours

[Click here](#) to view a demonstration and to register for the course



CHAMP (Collaboration for Homecare Advances in Management and Practice) is based at the Center for Home Care Policy & Research at the Visiting Nurse Service of New York and is funded in part with generous support by The Atlantic Philanthropies and The John A. Hartford Foundation.

5 Penn Plaza, 14th Floor, New York, NY 10001 | CHAMP@vnsny.org | www.champ-program.org