

May 5, 2011

New Course for You: Helping Patients Adhere

If your patients have difficulty adhering to their medications or other treatment regimens, you'll be happy to hear about our brand new e-learning course. The **Helping Patients Adhere** one-unit course helps you understand key reasons for non-adherence and gives you evidence-based strategies to help your patients change.



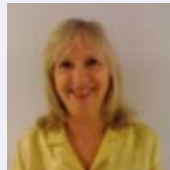
Plus, to show our appreciation during **National Nurses Week**, register before May 13th and **take this new course* for free!** [Click here](#) to learn more and to sign-up.



**Regular price is \$49, or \$35 for members of state associations partnered with CHAMP.*

CHAMP Pharmacy Expert Dennee Frey on our New Adherence Course

[Click here](#) to read Dennee Frey's blog post about our new Helping Patients Adhere one-unit course, and how she used some of the strategies from the course with her own mother, Joan!



Medication Adherence: A Tool to Use and a Brief to Peruse!

Of course, you can't wait to finish our new course to address medication management and adherence. [Click here](#) to read CHAMP's **Medication Management Evidence Brief**, which provides an overview of key issues and best practices.

And here is a **tool** from our Resource Library that you can use right away! Just click on the name to download.



[Risk Assessment for Medication Nonadherence](#)

Happy National Nurses Week!

The CHAMP team would like to express our deepest appreciation to all of the nurses in the CHAMP community during this year's National Nurses Week (May 6-12, 2011). We thank you for all of your hard work, and for taking such great care of our families, friends and neighbors.



Free E-Presentations

Watch CHAMP e-presentations anytime! Each one is developed and narrated by an expert on the topic. Take a look today!

[Considerations in Geriatric Medication Management](#)

[The Model for Improvement: Small Tests of Change and Using PDSA Cycles to Drive Improvement](#)

[Clinical Coaching with CHAMP Tools](#)

Review a Tool for a Chance to Win \$50!

All you have to do is review any of the [tools](#) in our Resource Library by filling out [this quick survey!](#) For each tool you review, you'll get a separate entry into our drawing for a **\$50 Amex giftcard**. The next drawing is **Monday, May 16th**.

Welcome Rhode Island Partnership for Home Care!

CHAMP welcomes our newest partner association, [Rhode Island Partnership for Home Care](#). Partnership members will receive a \$40 discount on CHAMP's *Geriatric Pain Management* and *Geriatric Medication Management* online courses for frontline managers; and a \$14 discount on CHAMP's one-unit e-learning activities for all home care clinicians.

More E-Learning Activities

Click on the course name to learn more and register.

[Developing Strong Home Care Teams](#)

\$49 (\$35*)/ participant

[Improving Communication with Physicians](#)

\$49 (\$35*)/ participant

[Best Practice Activities](#)

\$10 per activity or sign-up for all three for just \$25

** This rate applies to member agencies of: California Association for Health Services at Home, Georgia Association for Home Health Agencies, Home Care Alliance of Massachusetts, Home Care Association of Florida, Home Care Association of New Hampshire, Home Care Association of New York State, Home Care Association of Washington, MHA: An Association of Montana Health Care Providers, New Mexico Association for Home and Hospice Care, Pennsylvania Homecare Association, and Rhode Island Partnership for Home Care*

Not sure how to find us on Facebook and Twitter? [Click here](#) for instructions on how to join the conversation!



FOLLOW US ON [twitter](#)

CHAMP (Collaboration for Homecare Advances in Management and Practice) is based at the Center for Home Care Policy & Research at the Visiting Nurse Service of New York and is funded in part with generous support by The Atlantic Philanthropies and The John A. Hartford Foundation.